

WAHL CLIPPER CORPORATION  
World Headquarters  
P.O. Box 578, Sterling, IL 61081

Wahl (UK) Ltd.  
Herne Bay Trade Park  
Sea Street Herne Bay, Kent  
CT6 8JZ England

Wahl Australia PTY LTD  
3 Durbell St (PO Box 456)  
Acacia Ridge Qld 4110 Australia  
07 3272 4289  
contactus@unityagencies.com.au

Wahl NZ Limited  
4 Cornish St  
Korokoro, Lower Hutt 5045  
New Zealand  
04 5898817  
unityagenciesnz@xtra.co.nz

Wahl India Grooming Products  
Pvt Ltd  
201, 2nd Floor X Cube, Opp. Fun  
Republic  
New Link Road, Andheri (West)  
Mumbai – 400 053 Maharashtra,  
India

Wahl Clipper (PTY) Ltd.  
Suite L9 & L10  
Hingham Field Oce Park  
79 Boeing Road East  
Bedfordview, Gauteng 2007  
South Africa

Wahl International Consumer Group  
Engelenburgstraat 36  
7391 AM Twello, Nederland

Wahl International Consumer  
Group B.V  
(Dubai Branch)  
Dubai Silicon Oasis  
P.O. Box – 341023  
Dubai  
United Arab Emirates

WAHL Russia  
(ООО «Уолл Рус») **ЕАС**  
Российская Федерация  
129164, Москва,  
Ракетный бульвар, 16  
info@wahlrus.ru

Wahl Argentina  
Av. Alvarez Jonte 5655  
Buenos Aires (C1407GPK)  
Argentina

Wahl Clipper Brasil  
Rodovia Geraldo Scavone, 2300  
UC 45, Pedregulho,  
Jacarei - SP. CEP: 12305490

Wahl GmbH  
Roggenbachweg 9  
78089 Unterkirnach,  
Germany

WAHL Spain  
Fernando Giner de los Rios 12  
46910 Sedavi  
Valencia, Spain

© 2017 Printed in Hungary  
Wahl® is a registered trademark  
of Wahl Clipper Corporation

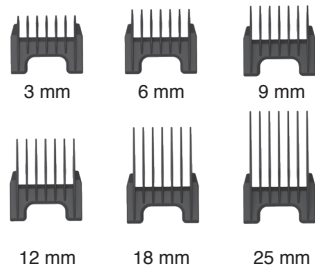
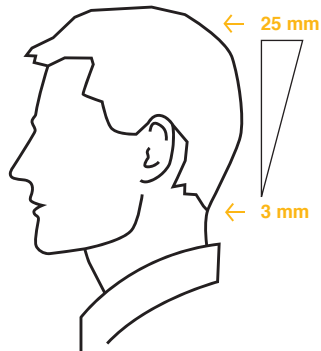
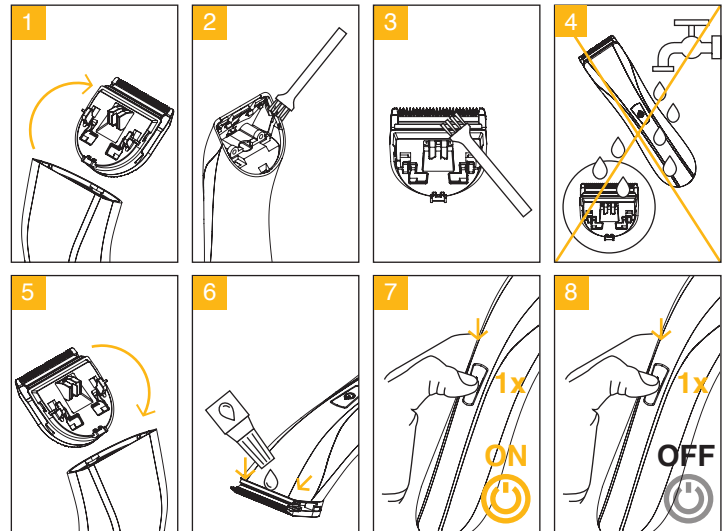
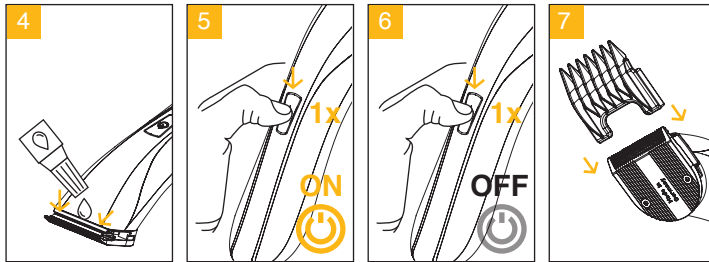
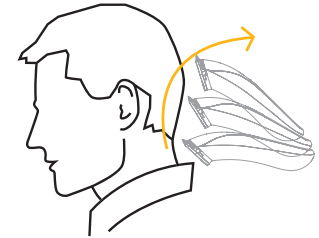
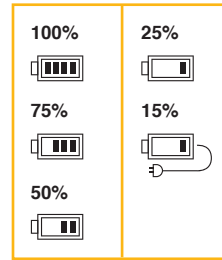
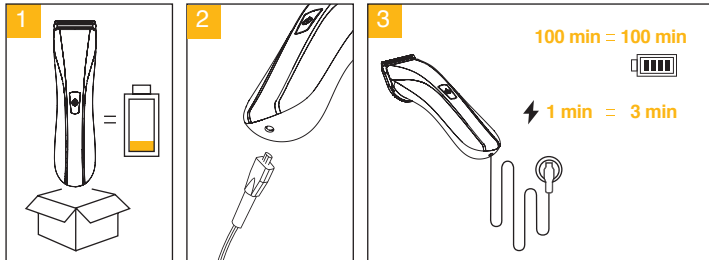
www.wahl-consumer.com

## 1911 WAHL Lithium Pro Clipper

MODEL/TYPE 1911



Part No.1911.1011



1911 WAHL Lithium Pro Clipper

1911 WAHL Lithium Pro Clipper

